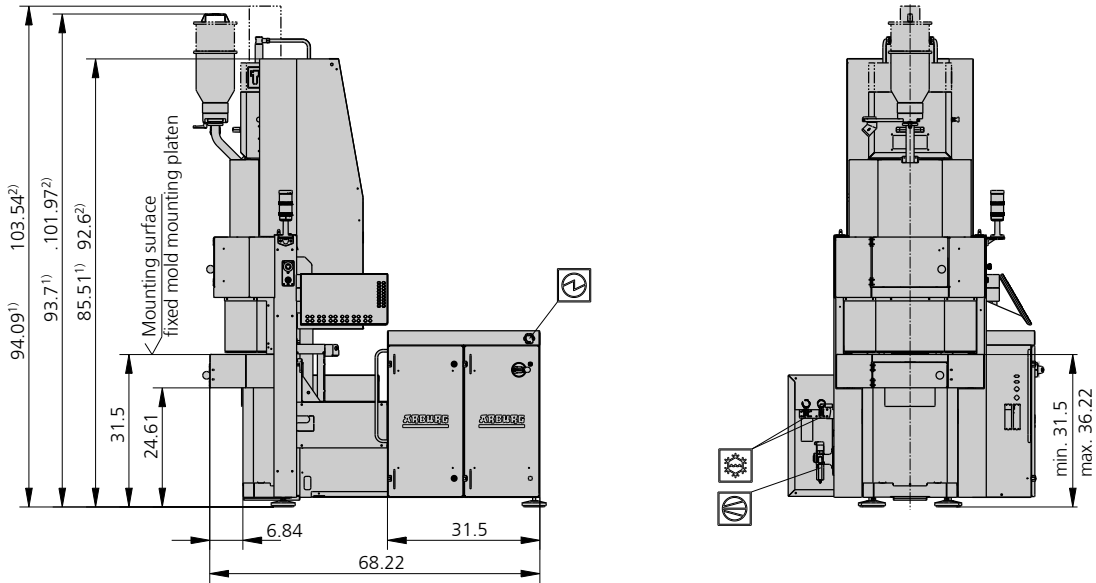


ALLROUNDER 175 V

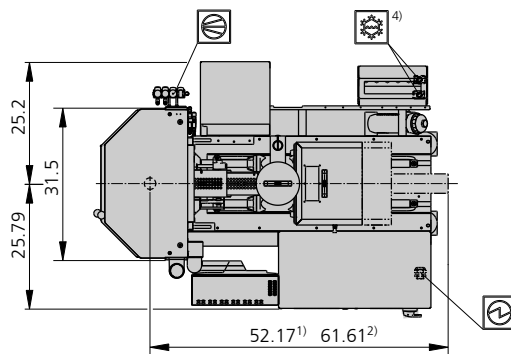
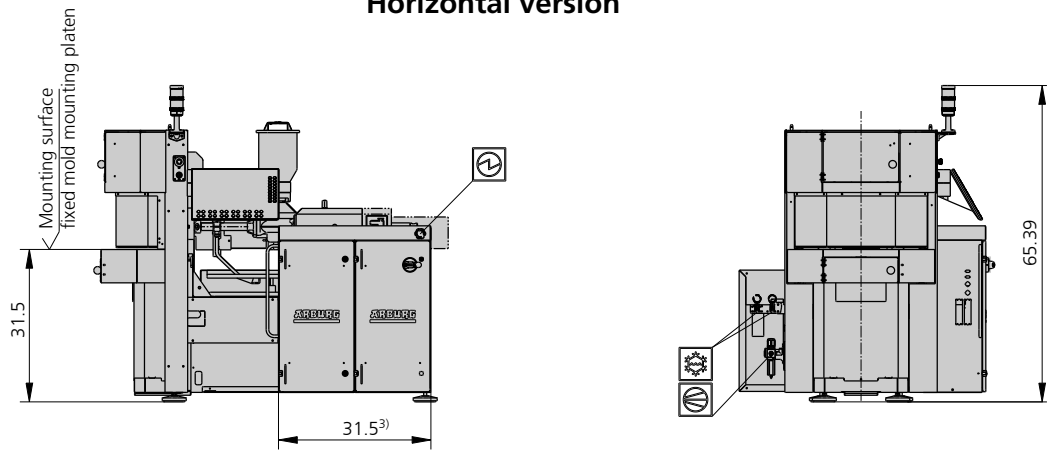
Vertical free-space system
Clamping force: 14 tons
Injection unit: 0.5 oz, 1.4 oz




ARBURG

MACHINE DIMENSIONS | 175 V



Horizontal version



-  Electrical connection
-  Cooling water connection
-  Pneumatic connection

- 1) Injection unit 0.5 oz
- 2) Injection unit 1.4 oz
- 3) Length of control cabinet and position of electrical connection may vary due to optional equipment installed
- 4) Position of cooling water connections may vary due to optional equipment installed

TECHNICAL DATA | 175 V

| Clamping unit | | 175 V | |
|-------------------------------------|------------------|-------------|--------------|
| with clamping force | max. tons | 14 | |
| Version | | Standard | Rotary table |
| Opening force stroke | max. tons inch | 3.3 8.86 | 3.3 8.86 |
| Mold height, fixed variable | min. inch | 3.94 --- | 3.03 --- |
| Platen daylight fixed variable | max. inch | 12.8 --- | 11.9 --- |
| Table diameter | inch | --- | 24.8 |
| Shuttle table stroke | inch | --- | --- |
| Angle of rotation, left/right | | --- | 180° |
| Rotation time for 180° | min. s | --- | 1.8 |
| Weight on rotary/shuttle table | max. lbs | --- | 132 |
| Weight of movable mold half | max. lbs | --- | 79.2 |
| Ejector force stroke | max. tons inch | 1.76 1.57 | 1.76 1.57 |
| Dry cycle time EUROMAP ² | min. s - inch | 2.9 - 4.8 | 2.9 - 4.8 |

| Injection unit | | 0.5 oz | | 1.4 oz | | |
|--|------------------|-------------|-------|-------------|-------|-------|
| with screw diameter | mm | 15 | 18 | 18 | 22 | 25 |
| Effective screw length | L/D | 17.7 | 14.5 | 24.5 | 20 | 17.5 |
| Screw stroke | max. inch | 2.36 | | 3.54 | | |
| Calculated stroke volume | max. cu. inch | 0.6 | 0.9 | 1.4 | 2.1 | 2.7 |
| Shot weight | max. oz / PS | 0.3 | 0.5 | 0.7 | 1.1 | 1.4 |
| Material throughput | max. lbs/h PS | 3.7 | 5.1 | 9.0 | 12.1 | 14.3 |
| | max. lbs/h PA6.6 | 1.8 | 2.6 | 4.6 | 6.2 | 7.3 |
| Injection pressure | max. psi | 31900 | 29000 | 36250 | 29000 | 22475 |
| Holding pressure | max. psi | 31900 | 29000 | 36250 | 29000 | 22475 |
| Injection flow ² | max. cu. inch/s | 1.6 | 2.3 | 1.6 | 2.4 | 3.2 |
| Screw circumferential speed ² | max. ft./min | 43 | 49 | 49 | 62 | 72 |
| Screw torque | max. ft./lbs | 37 | 44 | 66 | 81 | 89 |
| Nozzle contact force retraction stroke | max. tons inch | 4.40 4.72 | | 5.50 5.91 | | |
| Heating capacity zones | kW | 2.30 4 | | 4.10 4 | | |
| Feed hopper | lbs | 13 | | 13 | | |

| Drive and connection | | Standard | | Rotary table | | |
|---|-------------|----------|----------|--------------|----------|----------|
| with injection unit | | 0.5 oz | 1.4 oz | 0.5 oz | 1.4 oz | |
| Net weight of machine | lbs | 2860 | 2893 | 3355 | 3520 | |
| Sound press. level Ref. only ⁴ | dB(A) | 64 3 | | 64 3 | | |
| Oil filling | gal. | 11.89 | | 11.89 | | |
| Drive power ² | max. kW | 5.5 | | 5.5 | | |
| Electrical connection ³ | kW | 10 | 12 | 10 | 12 | |
| | Total | A | 35 --- | 40 --- | 35 --- | 40 --- |
| | Machine | A | --- 15 | --- 15 | --- 15 | --- 15 |
| | Heat | A | 10 --- | 15 --- | 10 --- | 15 --- |
| Cooling water connection | max. °F | 77 | | 77 | | |
| | min. Δp psi | 22 1" | | 22 1" | | |

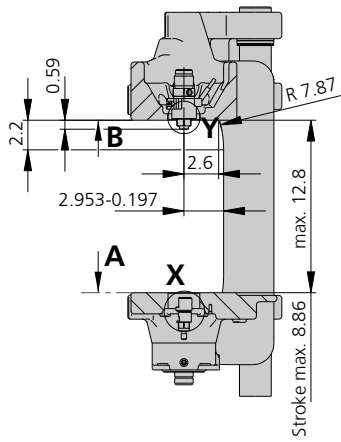
Machine type
with EUROMAP size designation ¹
175 V 14 tons 0.5 oz | 1.4 oz

Upon request: other machine types and mold installation heights, screws, drive powers etc.

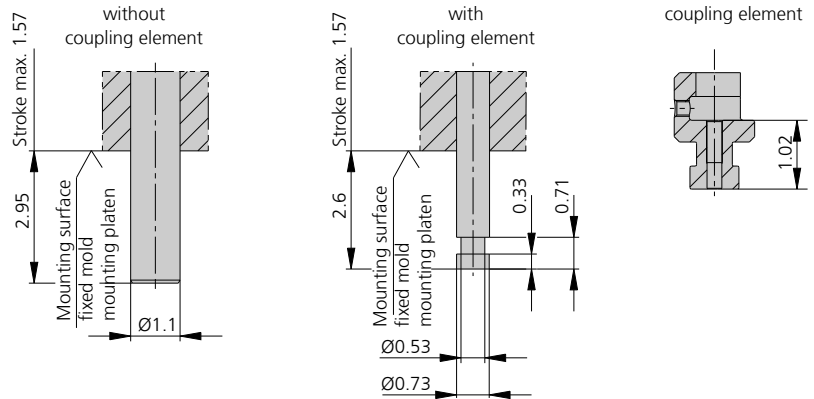
All specifications relate to the basic machine version. Deviations are possible depending on variants, process settings and material type. Depending on the drive, certain combinations, e.g. max. injection pressure and max. injection flow may be mutually exclusive.

- 1) Clamping force (tons) - large injection unit = max. stroke volume (cm³) x max. injection pressure (psi)
 - 2) Specifications depend on the drive variant / drive configuration.
 - 3) Specifications relate to 230V/60 cycles | 460V/60 cycles.
 - 4) See operating instructions for detailed information.
- [] Specifications apply to alternative equipment.

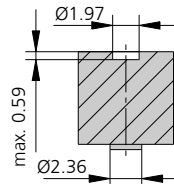
MOLD INSTALLATION DIMENSIONS | 175 V



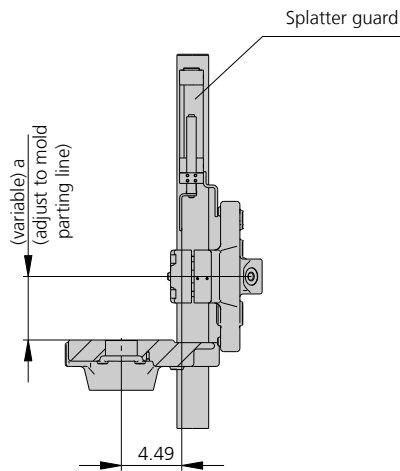
Ejector bolt | X



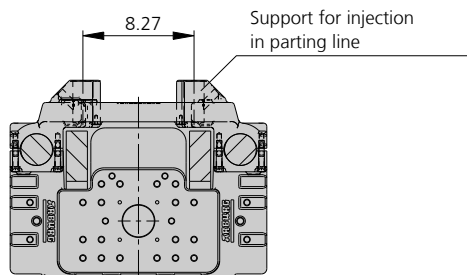
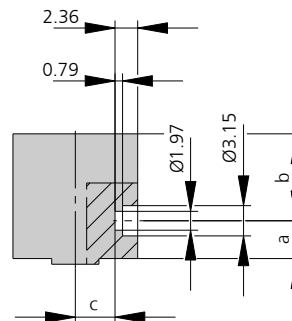
Counter bore in the mold (if required) | Y



Horizontal version



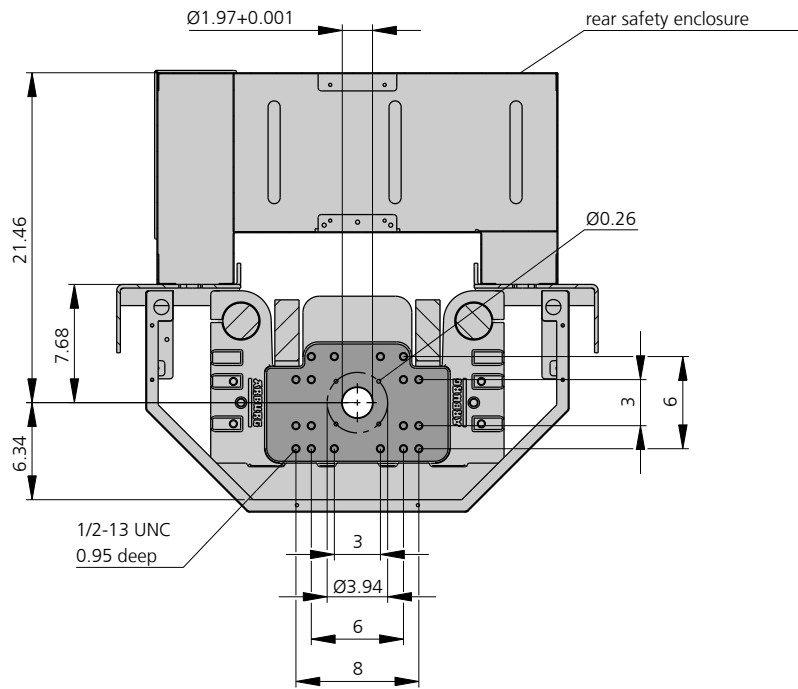
Counter bore in the mold (if required)



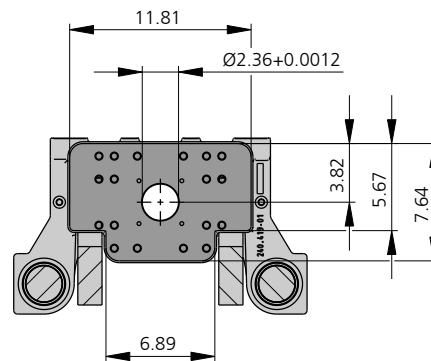
| | Injection positions | | ... with hydraulic nozzle | |
|--------|---------------------|-------|---------------------------|-------|
| | of injection units | | | |
| | 0.5oz | 1.4oz | 0.5oz | 1.4oz |
| a min. | 2.36 | | 3.15 | |
| a max. | 4.72 | | 4.72 | |
| b min. | 1.97 | | 1.97 | |
| c min. | 1.77 | | - | 0.43 |

MOLD INSTALLATION DIMENSIONS | 175 V

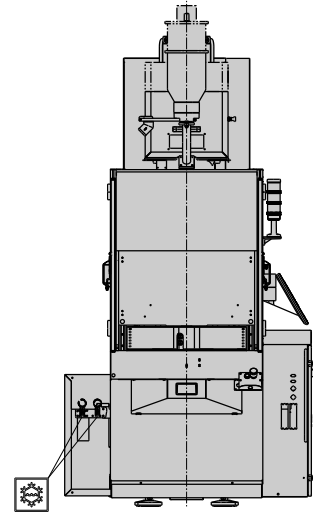
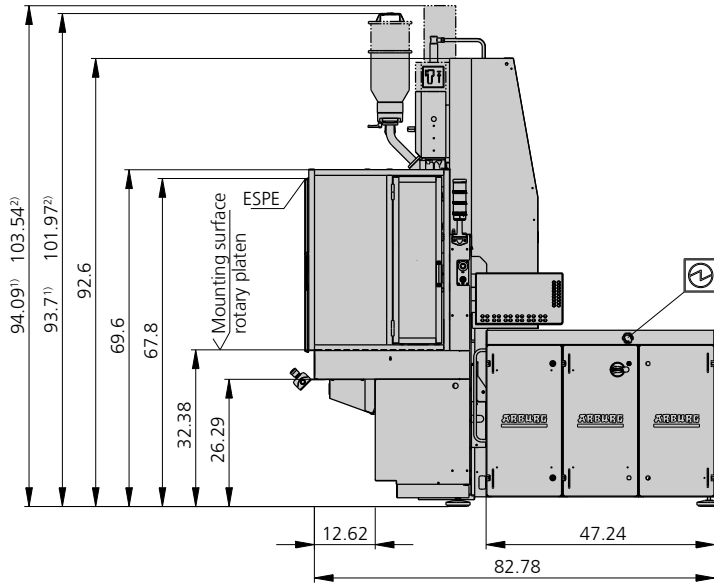
Fixed mold mounting platen | A



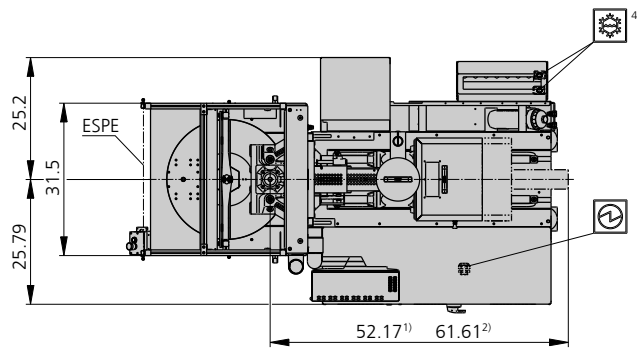
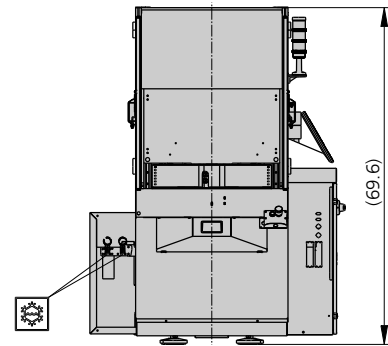
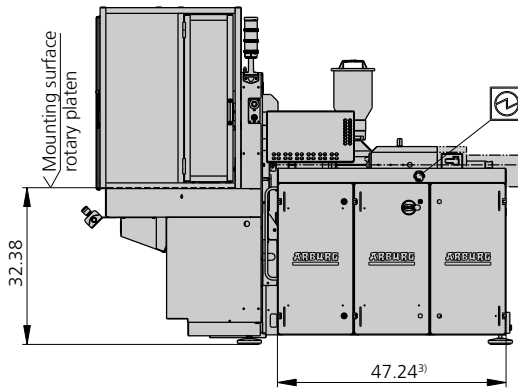
Moving mold mounting platen | B




ROTARY TABLE DIMENSIONS | 175 V



Horizontal version

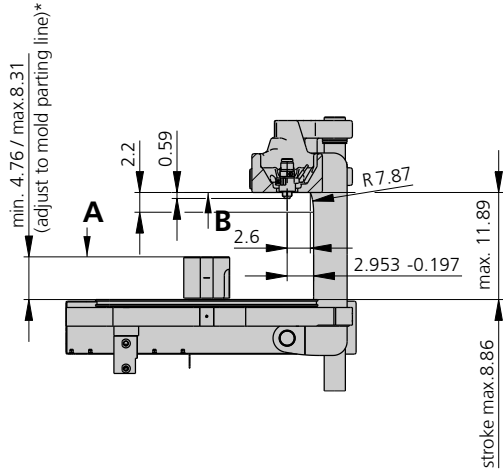


 Electrical connection

 Cooling water connection

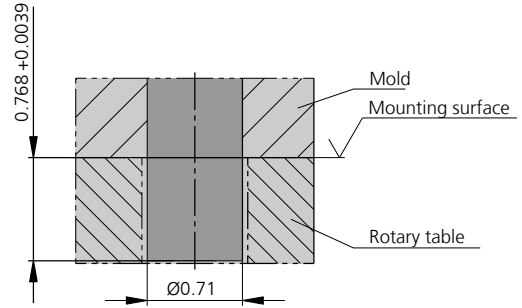
- 1) Injection unit 0.5 oz
- 2) Injection unit 1.4 oz
- 3) Length of control cabinet and position of electrical connection may vary due to optional equipment installed
- 4) Position of cooling water connections may vary due to optional equipment installed

MOLD INSTALLATION DIMENSIONS – ROTARY TABLE | 175 V

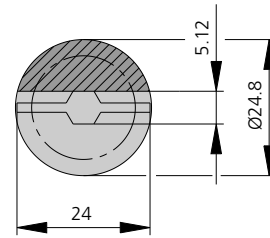


*(max. height: observe mold parting line with ejector stroke;
with vertical injection unit observe height of sprue)

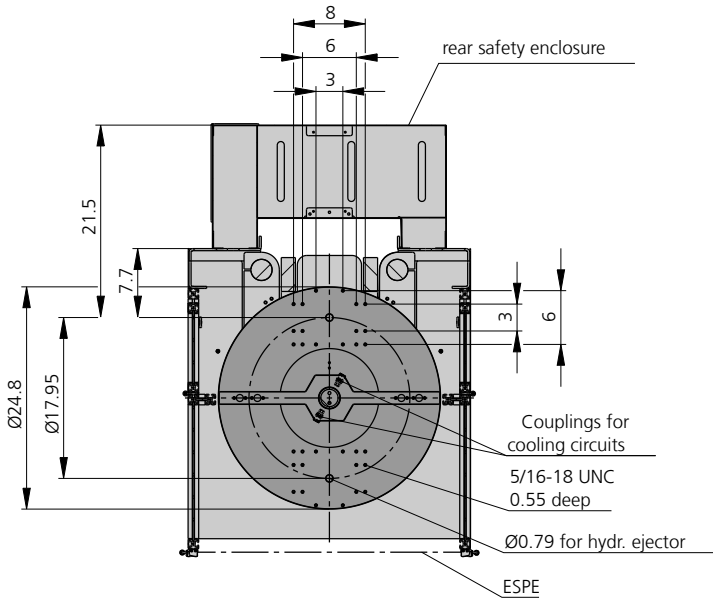
Center ejector (for blunt ejection)



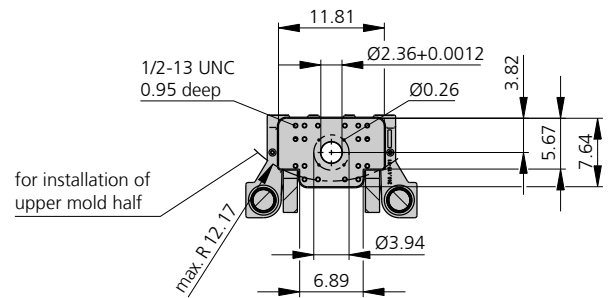
Useable mounting surface



Mold mounting platen rotary table | A

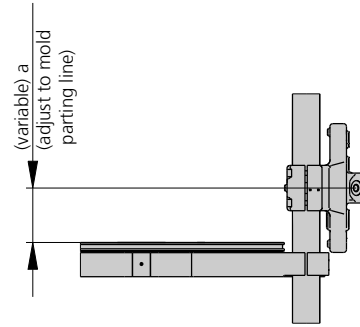
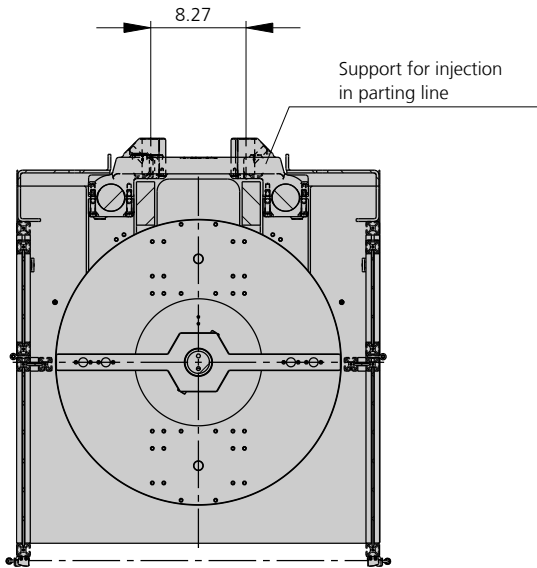


Moving mold mounting platen | B

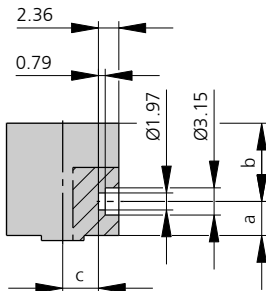


MOLD INSTALLATION DIMENSIONS – ROTARY TABLE | 175 V

Horizontal version



Counter bore in the mold (if required)



| | Injection positions | | ... with hydraulic nozzle | |
|--------|---------------------|-------|---------------------------|-------|
| | of injection units | | | |
| | 0.5oz | 1.4oz | 0.5oz | 1.4oz |
| a min. | 2.36 | | 3.15 | |
| a max. | 4.72 | | 4.72 | |
| b min. | 1.97 | | 1.97 | |
| c min. | 1.77 | | - | 0.43 |

SHOT WEIGHTS | 175 V

Theoretical shot weights for the most important materials

| Injection units | | 0.5 oz | | 1.4 oz | | |
|-------------------------------|---------------------------------------|--------|------|--------|------|------|
| Screw diameter | inch | 0.59 | 0.71 | 0.71 | 0.87 | 0.98 |
| | mm | 15 | 18 | 18 | 22 | 25 |
| Polystyrene | max. oz PS | 0.34 | 0.49 | 0.7 | 1.1 | 1.4 |
| Styrene heteropolymerizates | max. oz SB | 0.34 | 0.48 | 0.7 | 1.1 | 1.4 |
| | max. oz SAN, ABS ¹⁾ | 0.34 | 0.48 | 0.7 | 1.1 | 1.4 |
| Cellulose acetate | max. oz CA ¹⁾ | 0.39 | 0.55 | 0.8 | 1.2 | 1.6 |
| Celluloseacetobutyrate | max. oz CAB ¹⁾ | 0.35 | 0.51 | 0.8 | 1.1 | 1.5 |
| Polymethyl methacrylate | max. oz PMMA | 0.35 | 0.51 | 0.8 | 1.1 | 1.5 |
| Polyphenylene oxide, mod. | max. oz PPO | 0.32 | 0.46 | 0.7 | 1.0 | 1.3 |
| Polycarbonate | max. oz PC | 0.35 | 0.51 | 0.8 | 1.2 | 1.5 |
| Polysulphone | max. oz PSU | 0.37 | 0.53 | 0.8 | 1.2 | 1.6 |
| Polyamides | max. oz PA 6.6 PA 6 ¹⁾ | 0.34 | 0.49 | 0.7 | 1.1 | 1.4 |
| | max. oz PA 6.10 PA 11 ¹⁾ | 0.32 | 0.46 | 0.7 | 1.0 | 1.3 |
| Polyoximethylene (Polyacetal) | max. oz POM | 0.42 | 0.60 | 0.9 | 1.4 | 1.8 |
| Polyethylene terephthalate | max. oz PET | 0.41 | 0.58 | 0.9 | 1.3 | 1.7 |
| Polyethylene | max. oz PE-LD | 0.26 | 0.37 | 0.6 | 0.8 | 1.1 |
| | max. oz PE-HD | 0.26 | 0.39 | 0.6 | 0.9 | 1.1 |
| Polypropylene | max. oz PP | 0.26 | 0.39 | 0.6 | 0.9 | 1.1 |
| Fluoropolymerides | max. oz FEP, PFA, PCTFE ¹⁾ | 0.55 | 0.79 | 1.2 | 1.8 | 2.3 |
| | max. oz ETFE | 0.48 | 0.69 | 1.0 | 1.5 | 2.0 |
| Polyvinyl chloride | max. oz PVC-U | 0.41 | 0.60 | 0.9 | 1.3 | 1.7 |
| | max. oz PVC-P ¹⁾ | 0.39 | 0.55 | 0.8 | 1.2 | 1.6 |

1) average value

ARBURG GmbH + Co KG

Arthur-Hehl-Strasse
72290 Lossburg
Tel.: +49 7446 33-0
www.arburg.com
contact@arburg.com