

ALLROUNDER 720 E

GOLDEN ELECTRIC

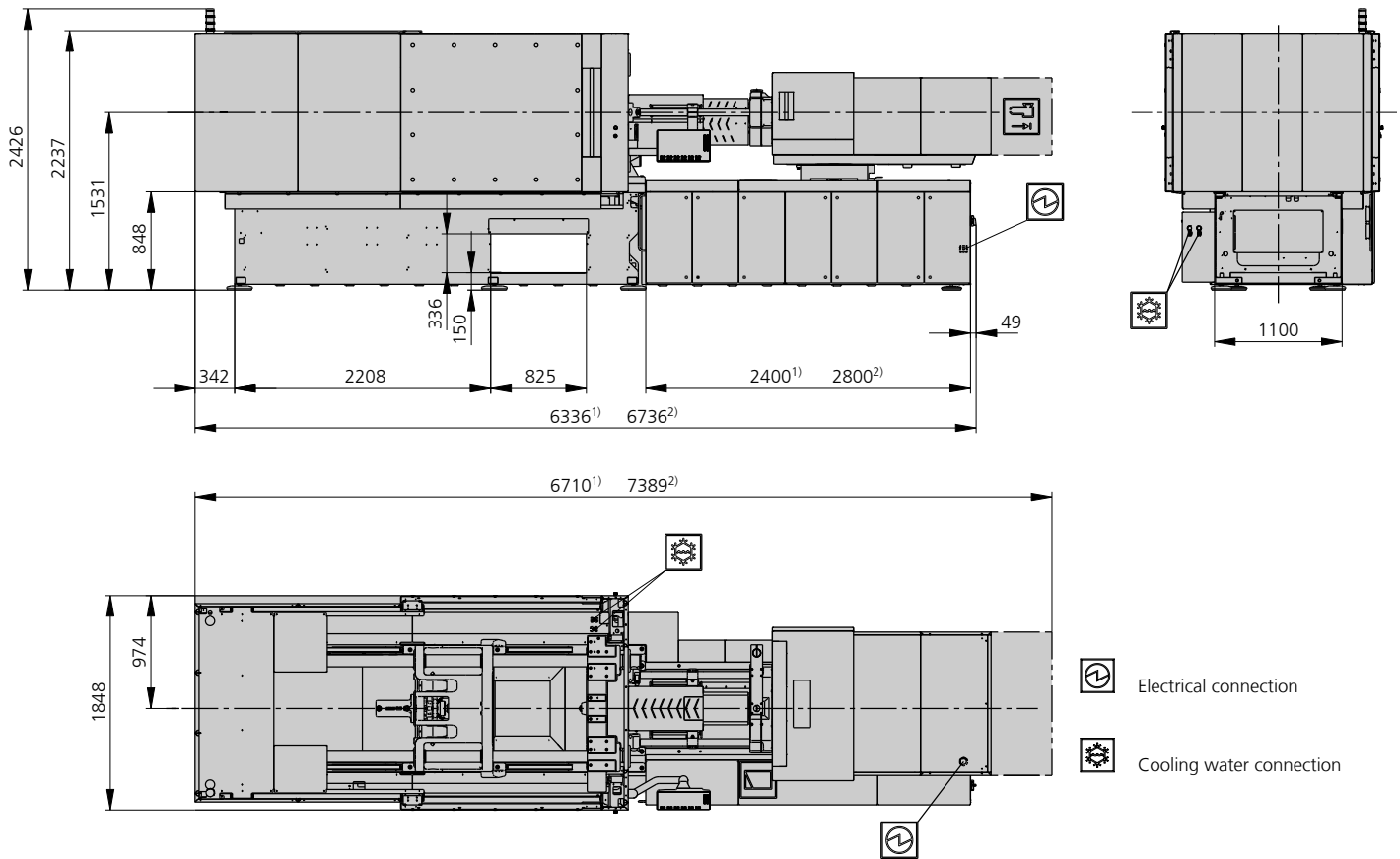
Distance between tie bars: 720 x 720 mm

Clamping force: 2800 kN

Injection unit (EUROMAP): 800, 1300

ARBURG

MACHINE DIMENSIONS | 720 E GOLDEN ELECTRIC



1) Injection unit 800
 2) Injection unit 1300

TECHNICAL DATA | 720 E GOLDEN ELECTRIC

Clamping unit		720 E GOLDEN ELECTRIC	
with clamping force	max. kN	2800	
Opening force stroke	max. kN mm	--- 550	
Mould height, fixed variable	min.-max. mm	--- 250-800	
Platen daylight fixed variable	max. mm	--- 800-1350	
Distance between tie bars (w x h)	mm	720 x 720	
Mould mounting platens (w x h)	max. mm	1040 x 1040	
Weight of movable mould half	max. kg	2500	
Ejector force stroke	max. kN mm	86 250	
Dry cycle time EUROMAP ²	min. s - mm	2,9 - 504	

Injection unit		800			1300		
with screw diameter	mm	45	50	55	55	60	70
Effective screw length	L/D	22	20	18	22	20	17
Screw stroke	max. mm	200			240		
Calculated stroke volume	max. cm ³	318	392	474	570	678	923
Shot weight	max. g PS	291	359	434	521	620	844
Material throughput	max. kg/h PS	46	53	59	86	96	115
	max. kg/h PA6.6	23	27	30	43	48	58
Injection pressure	max. bar	2470	2000	1650	2380	2000	1470
Holding pressure time	max. s - bar	300-1970	300-1600	300-1320	300-1900	300-1600	300-1170
Injection flow ²	max. cm ³ /s	175	216	261	261	311	423
		[223]	[275]	[333]	[333]	[396]	[539]
Injection speed	max. mm/s	110			110		
	max. mm/s	[140]			[140]		
Screw circumferential speed	max. m/min	28	31	34	28	31	36
Screw torque	max. Nm	900	1000	1100	1510	1640	1920
Nozzle contact force retraction stroke	max. kN mm	70 400			90 500		
Heating capacity zones	kW	19,9 8			22,9 8		
Feed hopper	l	---			---		

Drive and connection		800		1300	
with injection unit					
Net weight of machine	kg	14350		15850	
Sound press. level Insecurity ⁴	dB(A)			54 3	
Electrical connection ³	kW	50		68	
	Total	100		125	
	Machine	50		80	
	Heating	35		40	
Cooling water connection	max. °C			30	
	min. Δp bar			1,5 DN 25	

Machine type
with EUROMAP size designation ¹
720 E GOLDEN ELECTRIC 2800-800 | 1300

Upon request: other machine types and mould installation heights, screws, drive powers etc.

All specifications relate to the basic machine version. Deviations are possible depending on variants, process settings and material type. Depending on the drive, certain combinations, e.g. max. injection pressure and max. injection flow may be mutually exclusive.

1) Clamping force (kN) - size of injection unit = max. stroke volume (cm³) x max. injection pressure (kbar).

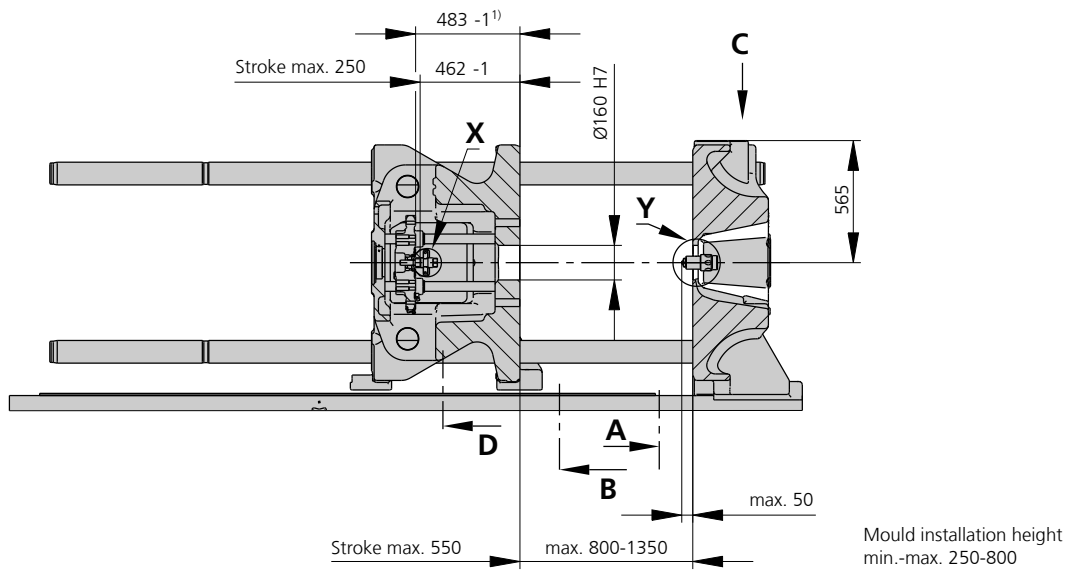
2) Specification of maximum injection flow at maximum injection pressure.

3) Specifications relate to 400 V/50 Hz.

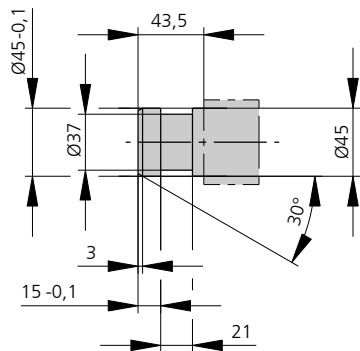
4) Detailed info in the operating instr.

[] Specifications apply to alternative equipment.

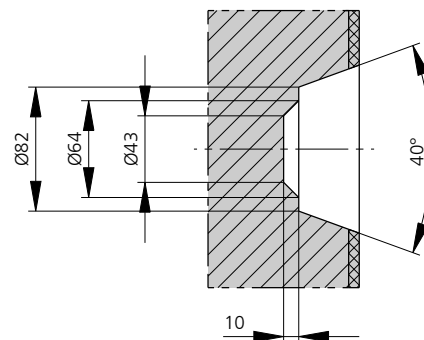
MOULD INSTALLATION DIMENSIONS | 720 E GOLDEN ELECTRIC



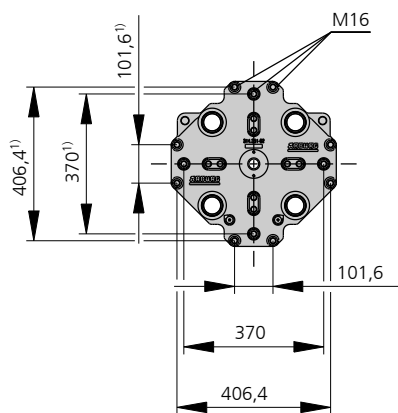
Ejector bolt | X



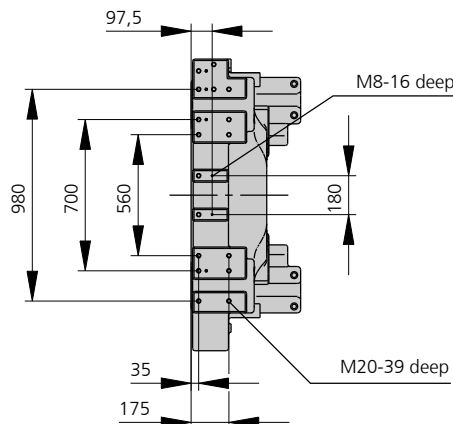
Bore in mould (if required) | Y



Ejector plate | D



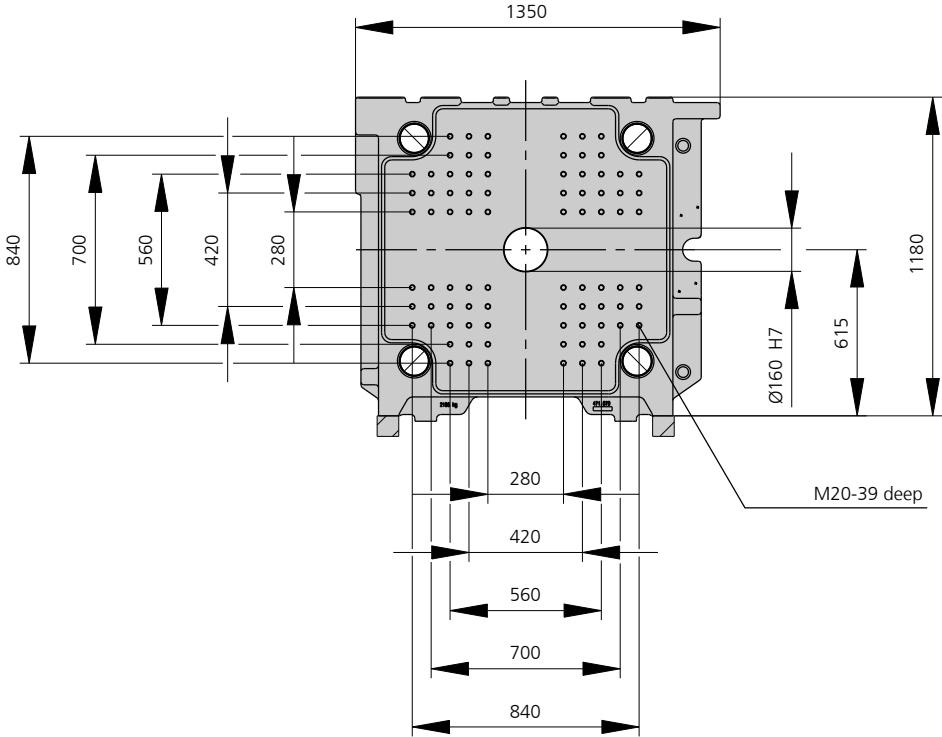
Robotic system mounting | C



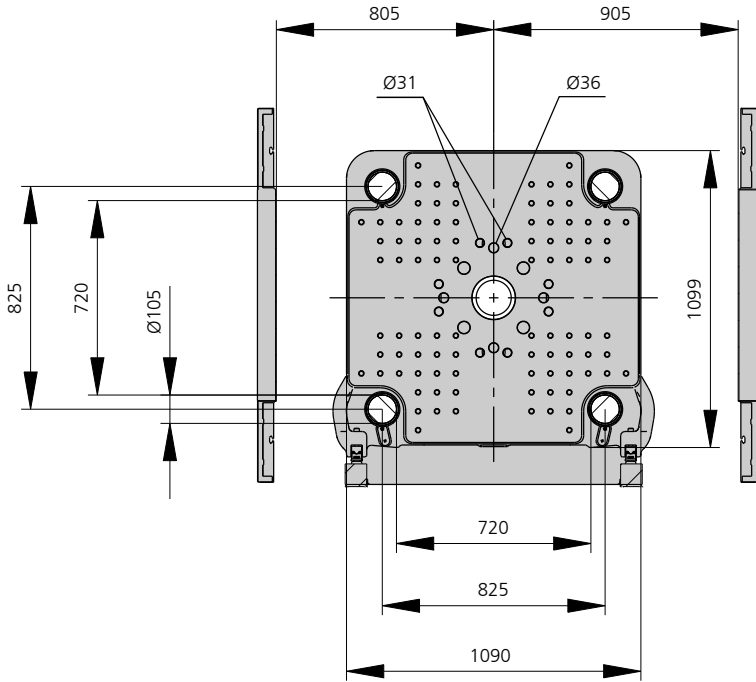
1) Positions of ejector plate

MOULD INSTALLATION DIMENSIONS | 720 E GOLDEN ELECTRIC

Fixed mould mounting platen | A



Fixed mould mounting platen | B



SHOT WEIGHTS | 720 E GOLDEN ELECTRIC

Theoretical shot weights for the most important injection moulding materials

Injection units according to EUROMAP		800			1300		
Screw diameter	mm	45	50	55	55	60	70
Polystyrene	max. g PS	291	359	434	510	607	826
Styrene heteropolymerizates	max. g SB	284	350	424	498	593	807
	max. g SAN, ABS ¹⁾	278	344	416	488	581	791
Cellulose acetate	max. g CA ¹⁾	327	404	488	574	683	930
Celluloseacetobutyrate	max. g CAB ¹⁾	304	375	454	534	635	865
Polymethyl methacrylate	max. g PMMA	300	371	449	527	627	854
Polyphenylene ether, mod.	max. g PPE	270	333	403	473	563	767
Polycarbonate	max. g PC	305	377	456	536	638	868
Polysulphone	max. g PSU	316	390	471	554	659	897
Polyamides	max. g PA 6.6 PA 6 ¹⁾	289	357	431	507	603	821
	max. g PA 6.10 PA 11 ¹⁾	270	333	403	473	563	767
Polyoximethylene (Polyacetal)	max. g POM	359	443	536	630	749	1020
Polyethylene terephthalate	max. g PET	346	427	517	607	723	984
Polyethylene	max. g PE-LD	219	271	328	385	458	624
	max. g PE-HD	227	280	339	398	473	644
Polypropylene	max. g PP	232	286	346	406	484	658
Fluoropolymerides	max. g FEP, PFA, PCTFE ¹⁾	465	574	695	816	971	1322
	max. g ETFE	408	504	609	716	852	1160
Polyvinyl chloride	max. g PVC-U	351	434	525	616	734	998
	max. g PVC-P ¹⁾	324	401	485	569	678	922

1) average value

ARBURG GmbH + Co KG
 Arthur-Hehl-Strasse
 72290 Lossburg
 Tel.: +49 7446 33-0
 www.arburg.com
 contact@arburg.com