

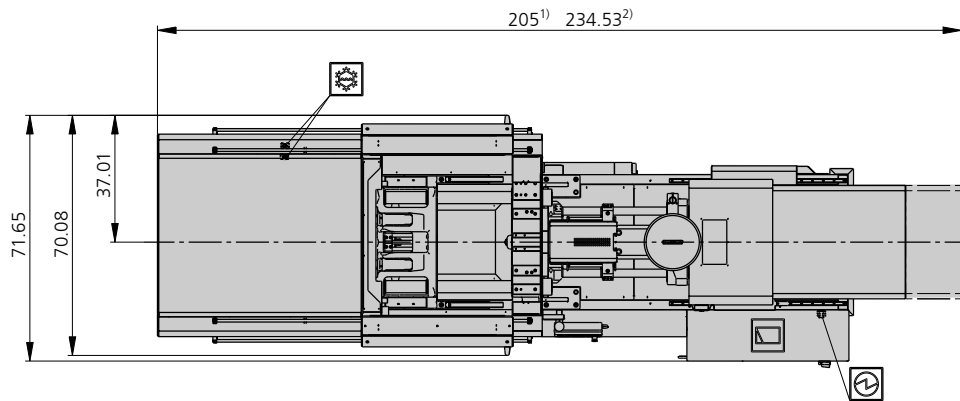
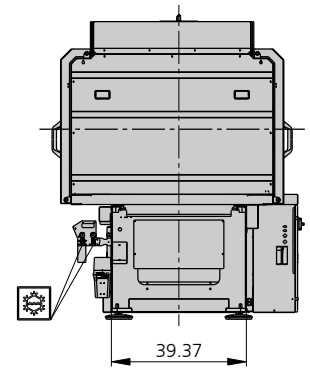
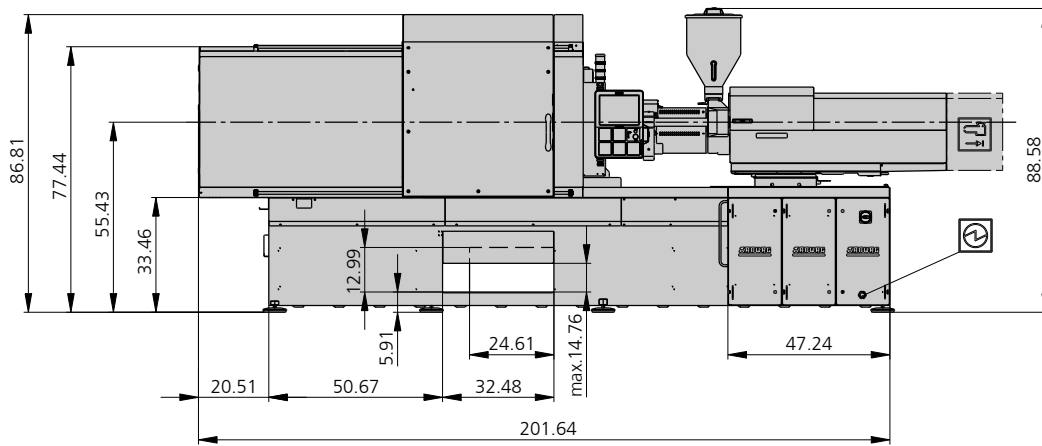
ALLROUNDER 570 E

GOLDEN ELECTRIC

Distance between tie bars: 22.44 x 22.44 (570 x 570 mm)
Clamping force: 220 tons
Injection unit: 8.2 oz, 15.3 oz

ARBURG

MACHINE DIMENSIONS | 570 E GOLDEN ELECTRIC



Electrical connection



Cooling water connection

1) Injection unit 8.2 oz
2) Injection unit 15.3 oz

TECHNICAL DATA | 570 E GOLDEN ELECTRIC

Clamping unit		570 E GOLDEN ELECTRIC	
with clamping force	max. tons	220	
Opening force stroke	max. tons inch	--- 17.72	
Mold height, fixed variable	min.-max. inch	--- 9.84-21.65	
Platen daylight fixed variable	max. inch	--- 27.56-39.37	
Distance between tie bars (w x h)	inch	22.44 x 22.44	
Mold mounting platens (w x h)	max. inch	31.30 x 31.30	
Weight of movable mold half	max. lbs	2860	
Ejector force stroke	max. tons inch	6.60 7.87	
Dry cycle time EUROMAP ²	min. s - inch	1.8 - 15.71	

Injection unit		8.2 oz			15.3 oz		
with screw diameter	mm	35	40	45	45	50	55
Effective screw length	L/D	23	20	18	22	20	18
Screw stroke	max. inch	6.30			7.87		
Calculated stroke volume	max. cu. inch	9.4	12.3	15.5	19.4	23.9	28.9
Shot weight	max. oz / PS	5.0	6.5	8.2	10.3	12.7	15.3
Material throughput	max. lbs/h PS	55.0	63.8	77.0	101.2	116.6	129.8
	max. lbs/h PA6.6	27.5	33.0	38.5	50.6	59.4	66.0
Injection pressure	max. psi	36250	29000	22910	35815	29000	23925
Holding pressure time	max. s - psi	300-30305	300-23200	300-18270	300-28565	300-23200	300-19140
Injection flow ²	max. cu. inch/s	7.7	10.0	12.7	10.6	13.2	15.9
	max. cu. inch/s	[13.9]	[17.2]	[20.7]	[13.9]	[17.2]	[20.7]
Injection speed ⁵	max. inch/s	5.1			4.3		
	max. inch/s	[6.69]			[5.51]		
Screw circumferential speed	max. ft./min	89	102	115	92	102	112
Screw torque	max. ft./lbs	354	406	450	664	738	812
Nozzle contact force retraction stroke	max. tons inch	6.60 11.81			7.70 15.75		
Heating capacity zones	kW	9.40 5			19.90 8		
Feed hopper	lbs	80			80		

Drive and connection		8.2 oz		15.3 oz	
with injection unit					
Net weight of machine	lbs	17160		18920	
Sound press. level Ref. only ⁴	dB(A)	55		3	
Electrical connection ³	kW	30		47	
	Total	A		---	
	Machine	A		--- 50	
	Heat	A		30 ---	
Cooling water connection	max. °F	95			
	min. Δp psi	22		1"	

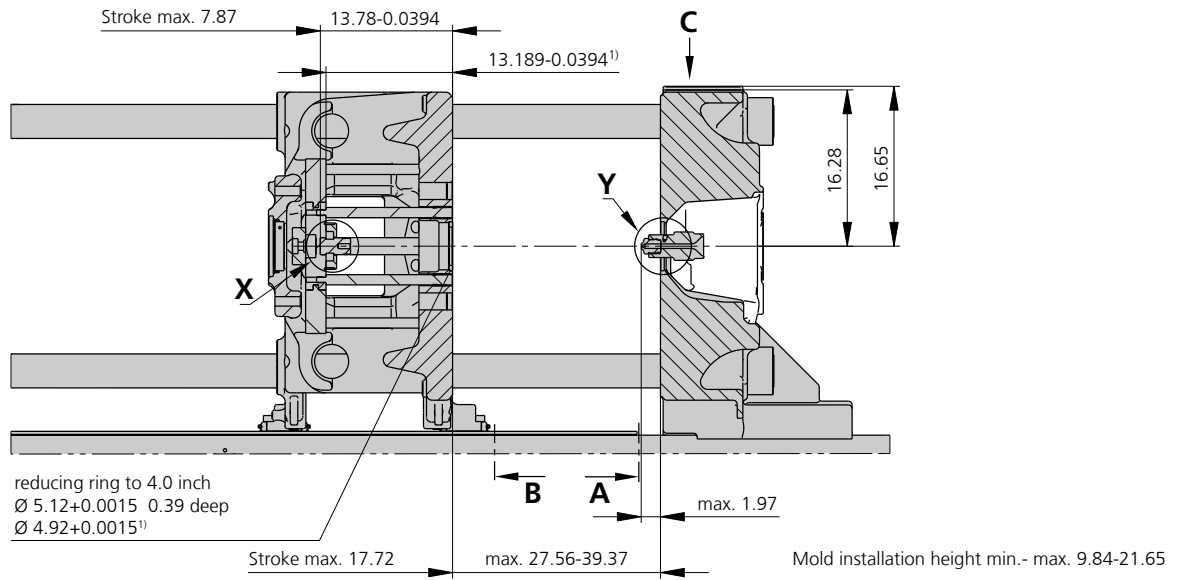
Machine type
with EUROMAP size designation ¹
570 E GOLDEN ELECTRIC 220 tons 8.2 | 15.3 oz

Upon request: other machine types and mold installation heights, screws, drive powers etc.

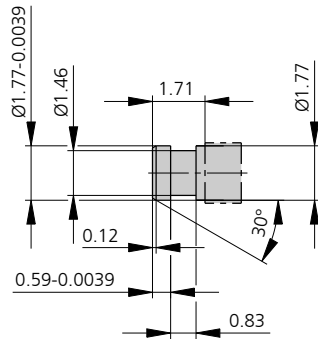
All specifications relate to the basic machine version. Deviations are possible depending on variants, process settings and material type. Depending on the drive, certain combinations, e.g. max. injection pressure and max. injection flow may be mutually exclusive.

- 1) Clamping force (tons) - Size of injection unit = max. stroke volume (cu. inch) x max. injection pressure (psi)
 - 2) Specification of maximum injection flow at maximum injection pressure.
 - 3) Specifications relate to 230V/60 cycles | 460V/60 cycles.
 - 4) Detailed info in the operating instr.
 - 5) Forward speed of plasticizing screw at 1,000 bar injection pressure.
- [] Information applies to alternative equipment.

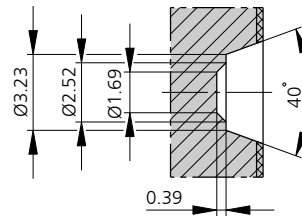
MOLD INSTALLATION DIMENSIONS | 570 E GOLDEN ELECTRIC



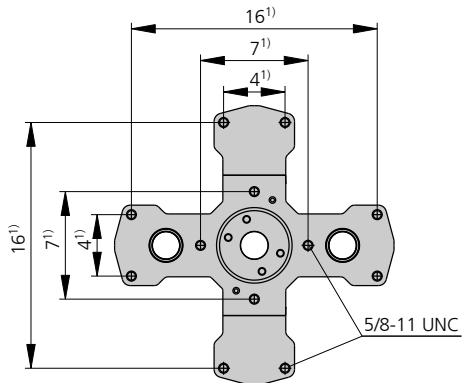
Center ejector | X



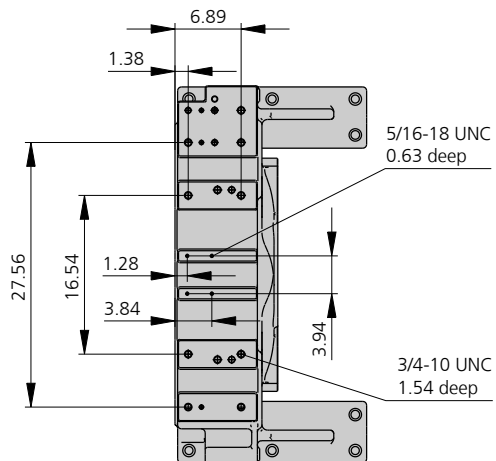
Bore in mold (if required) | Y



Ejector plate | D



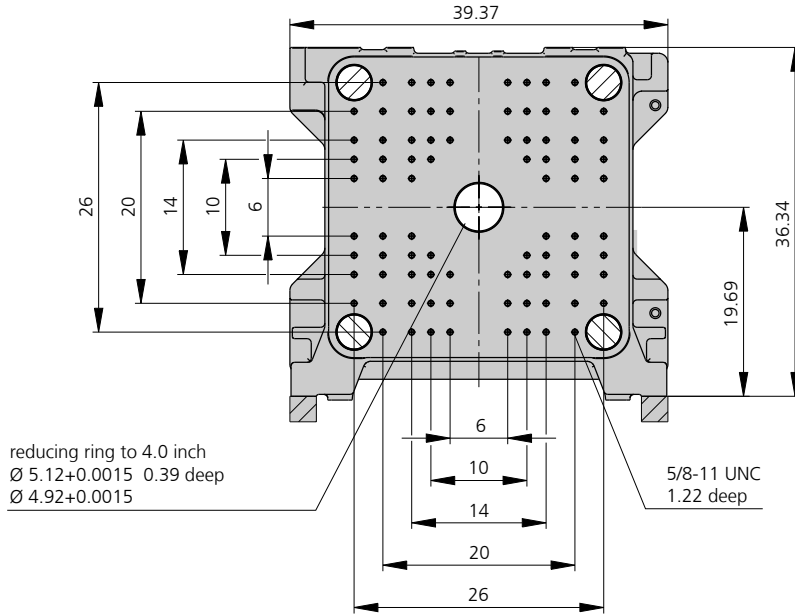
Robotic system mounting | C



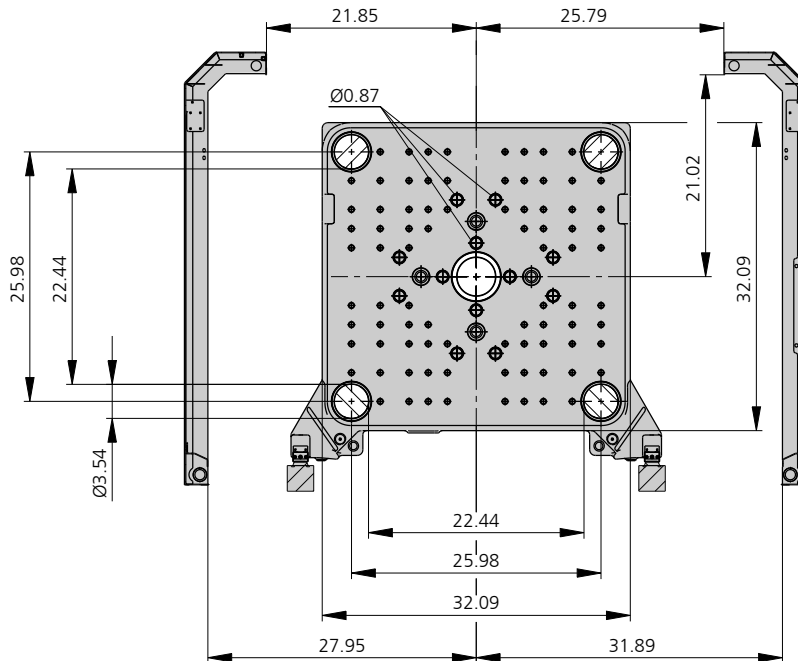
1) Postions of ejector plate

MOLD INSTALLATION DIMENSIONS | 570 E GOLDEN ELECTRIC

Fixed mold mounting platen | A



Moving mold mounting platen | B



SHOT WEIGHTS | 570 E GOLDEN ELECTRIC

Theoretical shot weights for the most important materials

Injection units		8.2 oz			15.3 oz		
Screw diameter	inch	1.38	1.57	1.77	1.77	1.97	2.17
	mm	35	40	45	45	50	55
Polystyrene	max. oz PS	5.0	6.5	8.2	10.3	12.7	15.3
Styrene heteropolymerizates	max. oz SB	4.8	6.3	8.0	10.0	12.3	15.0
	max. oz SAN, ABS ¹⁾	4.8	6.2	7.9	9.8	12.1	14.7
Cellulose acetate	max. oz CA ¹⁾	5.6	7.3	9.2	11.5	14.3	17.2
Celluloseacetobutyrate	max. oz CAB ¹⁾	5.2	6.8	8.6	10.7	13.2	16.0
Polyethyl methacrylate	max. oz PMMA	5.1	6.7	8.5	10.6	13.1	15.8
Polyphenylene oxide, mod.	max. oz PPO	4.6	6.0	7.6	9.5	11.7	14.2
Polycarbonate	max. oz PC	5.2	6.8	8.6	10.8	13.3	16.1
Polysulphone	max. oz PSU	5.4	7.0	8.9	11.1	13.8	16.6
Polyamides	max. oz PA 6.6 PA 6 ¹⁾	4.9	6.5	8.2	10.2	12.6	15.2
	max. oz PA 6.10 PA 11 ¹⁾	4.6	6.0	7.6	9.5	11.7	14.2
Polyoximethylene (Polyacetal)	max. oz POM	6.1	8.0	10.1	12.7	15.6	18.9
Polyethylene terephthalate	max. oz PET	5.9	7.7	9.8	12.2	15.1	18.2
Polyethylene	max. oz PE-LD	3.7	4.9	6.2	7.7	9.6	11.6
	max. oz PE-HD	3.9	5.0	6.4	8.0	9.9	12.0
Polypropylene	max. oz PP	4.0	5.2	6.5	8.2	10.1	12.2
Fluoropolymerides	max. oz FEP, PFA, PCTFE ¹⁾	7.9	10.4	13.1	16.4	20.2	24.5
	max. oz ETFE	6.9	9.0	11.4	14.3	17.7	21.4
Polyvinyl chloride	max. oz PVC-U	6.0	7.8	9.9	12.4	15.3	18.5
	max. oz PVC-P ¹⁾	5.5	7.2	9.2	11.4	14.1	17.1

1) average value

ARBURG GmbH + Co KG

Arthur-Hehl-Strasse
72290 Lossburg
Tel.: +49 7446 33-0
www.arburg.com
contact@arburg.com