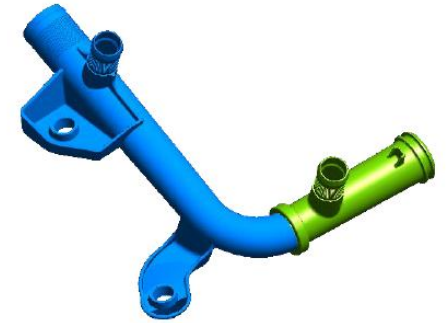


# 820 A 4000 – 2100

## Mobility

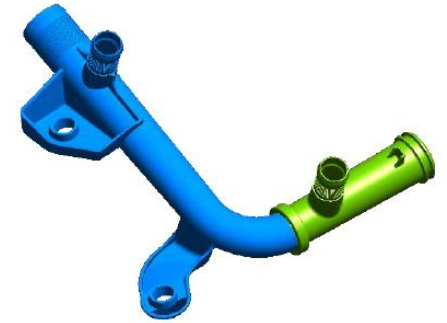
- 820 A 4000 – 2100 Ultimate
  - Part Multitube
  - Cavities 1+1
  - Cycle time 50s
  - Material PA6 GF30, Ultramid B3WG6
  - Shot- / part weight 150g
  - Transfer, removal and set down on conveyor belt with ML-V 40



# 820 A 4000 – 2100

## Highlight

- Complex mold technology
  - 1+1 cavity mold
  - First- (blue) and second shot (green)
  - Transfer in mold by robot
  - Electric driven slider with own control system



# 820 A 4000 – 2100

- 820 A 4000 – 2100 Ultimate
    - Partner
    - Mold
    - Material
- GEORGES PERNOUD SAS, F  
BASF SE, D