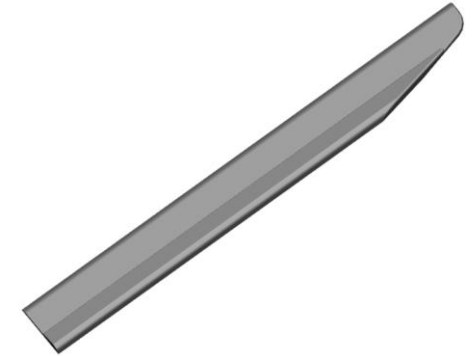


920 H 5000 – 4600

Mobility

- 920 H 5000 – 4600
 - Part Entry sill
 - Cavities 2
 - Cycle time 30s
 - Material PIR PP EPDM TV15 HMFR
 - Shot- / part weight 280g / 140g
 - Removal with ML-V 40 with simple EOAT and set down on conveyor belt
 - Simple EOAT realised with Gimatic elements



920 H 5000 – 4600

Highlight

- Cascade injection IntelliGate (Synventive Molding Solutions)
 - Automatic melt front detection enables autonomous injection moulding
 - Automatic viscosity compensation, no manual set-up required
 - Automatic process control, up to 90% shorter set-up time
 - Regulation and control of the needles via external device



Quelle: www.barnesmodingolutions.com



Quelle: www.barnesmodingolutions.com

920 H 5000 – 4600

Highlight

- Circular economy
 - Reliable processing of recyclates
 - Recyclate module
- Recyclables for material production
 - Unpainted production waste from automotive manufacturing
 - 100% recycling content



920 H 5000 – 4600

- 920 H 5000 – 4600

- Partner

- Mold

- Hotrunner

- Control

- Material

- Barnes Molding Solutions, D

- Synventive Molding Solutions GmbH, D

- GF Controls GmbH – Gammaflux, D

- BZ Kunststoff Recycling, D