

# 270 C 400 – 70 GE

## Leisure

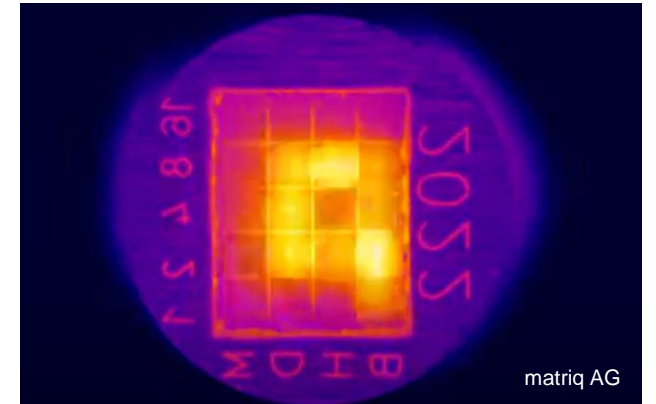
- 270 C 400 – 70 GOLDEN EDITION
  - Part Shopping car chip
  - Cavities 1
  - Cycle time 20s
  - Material PP, Bormed™ RF825MO
  - Shot- / part weight 6g / 0,92g
  - Removal and set down on conveyor belt with ML-S 6
  - Simple EOAT realised with Gimatic elements



# 270 C 400 – 70 GE

## Highlight

- Marking / Traceability
  - Dynamic Mould Technology
  - Inline solution during injection moulding to realise the traceability
    - continuous and individual part marking
  - Mold insert with micro-heating
    - marking the surface in ms
  - Test possibility for visitors
    - 4 different DMC
    - Reading and handout of the suitable holder



# 270 C 400 – 70 GE

- 270 C 400 – 70 GOLDEN EDITION
  - Partner
  - Marking                      matriq AG, CH
  - Mold                              Röchling Medical Waldachtal, D
  - Material                        Borealis Polymere GmbH, D