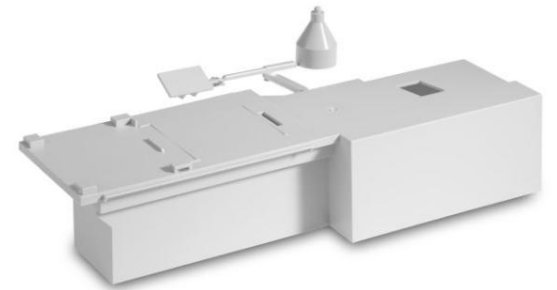


# 570 A 2000 – 800

## Leisure

- 570 A 2000 – 800 Ultimate
  - Part machine base model
  - Cavities 1+1+1
  - Cycle time 50s
  - Material PCR ABS, Eco ABS
  - Shot- / part weight 100,5g / 96,5g + 1,8g + 1,1g
  - Family mould
    - Machine base + hopper + GESTICA



# 570 A 2000 – 800

## Highlight

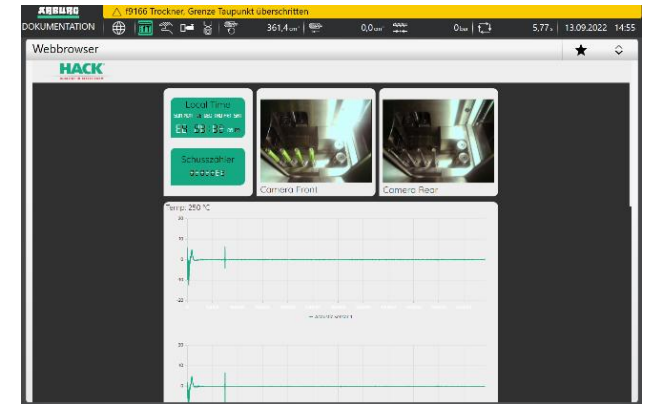
- „Machine communicate with mold“
  - moldlife® sense from HACK digital solutions
  - Integrated in POLAR-FORM mould
    - Tool acoustics
    - Plate parallelism measurement
    - Digital part counter
    - Maintenance alignment with machine



# 570 A 2000 – 800

## Highlight

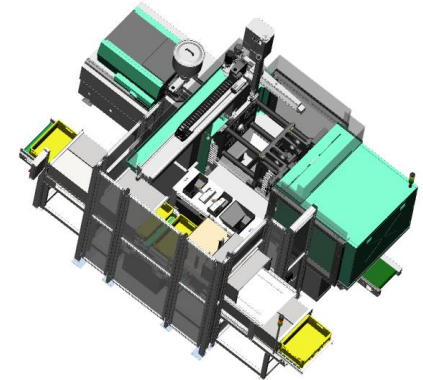
- „Machine communicate with mold“
  - Predictive Maintenance
    - Increase of availability through monitoring
  - Connection to machine via OPC-UA
  - NEU noise ID of the acoustic sensors for monitoring
  - check mold temperature balance
  - event management



# 570 A 2000 – 800

## Highlight

- Automation – Interlinking of several processes in a single automation cell
  - Removal of 3 different parts through specific EOAT
  - Ready-to-use                      Step-by-step separation of components from sprue by cutting station
  - Set down on conveyor belt



# 570 A 2000 – 800

## Highlight

- Circular economy
  - PCR material produced from collected refrigerators
- „Ensure part quality“
  - Usage of RecyclatePilot for constant part quality
- Recyclate package
  - Reliable processing of recyclates through recyclate modul



# 570 A 2000 – 800

- 570 A 2000 – 800 Ultimate
  - Partner
  - Mold POLAR-FORM Werkzeugbau GmbH, D
  - molldlife® sense HACK digital solutions, D
  - Hotrunner Mold-Masters Europa GmbH, D
  - EOAT Barth Mechanik GmbH, D
  - & cutting station
  - Material USG Umweltservice GmbH, AT