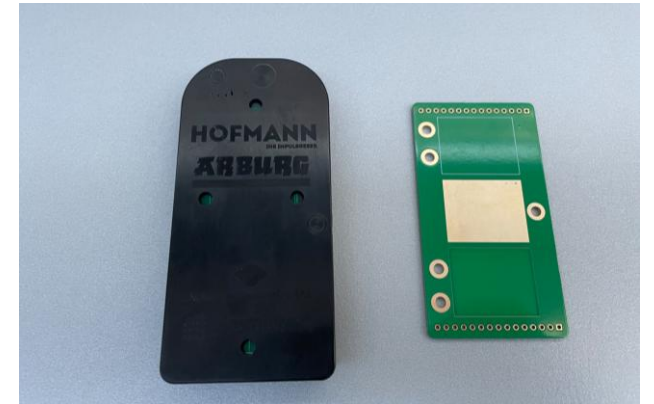


470 A 1000 – 290

Electronics

- 470 A 1000 – 290 Comfort
 - Part PCB
 - Cavities 2
 - Cycle time 120s
 - Material Thermoset, Epoxidharz M261A
 - Shot- / part weight 106g / 53g
 - Mold with Kistler cavity pressure sensors



470 A 1000 – 290

Highlight

- Automation
 - Preparation of the blanks via double cassette
 - Pick-up with ML and activation of the surface with plasma
 - Improving the adhesion of the epoxy to the PCB
 - Insert blank / remove overmoulded blank
 - Deposit on conveyor belt



470 A 1000 – 290

Highlight

- Application expertise crosslinking materials
 - Processing of thermosets with electric ALLDRVE machines
- Reproduceable moulding of thermosets
 - ReferencePilot

470 A 1000 – 290

- 470 A 1000 – 290 Comfort
 - Partner
 - Mold Siegfried Hofmann GmbH, D
 - Sensors Kistler Instrumente GmbH, D
 - Material + PCB Sumitomo Bakelite Europe (Ghent) NV, BE
 - Plasma Plasmatreat GmbH, D
 - EOAT + support Barth Mechanik GmbH, D
 - PCB's