

## ALLROUNDER 720 S

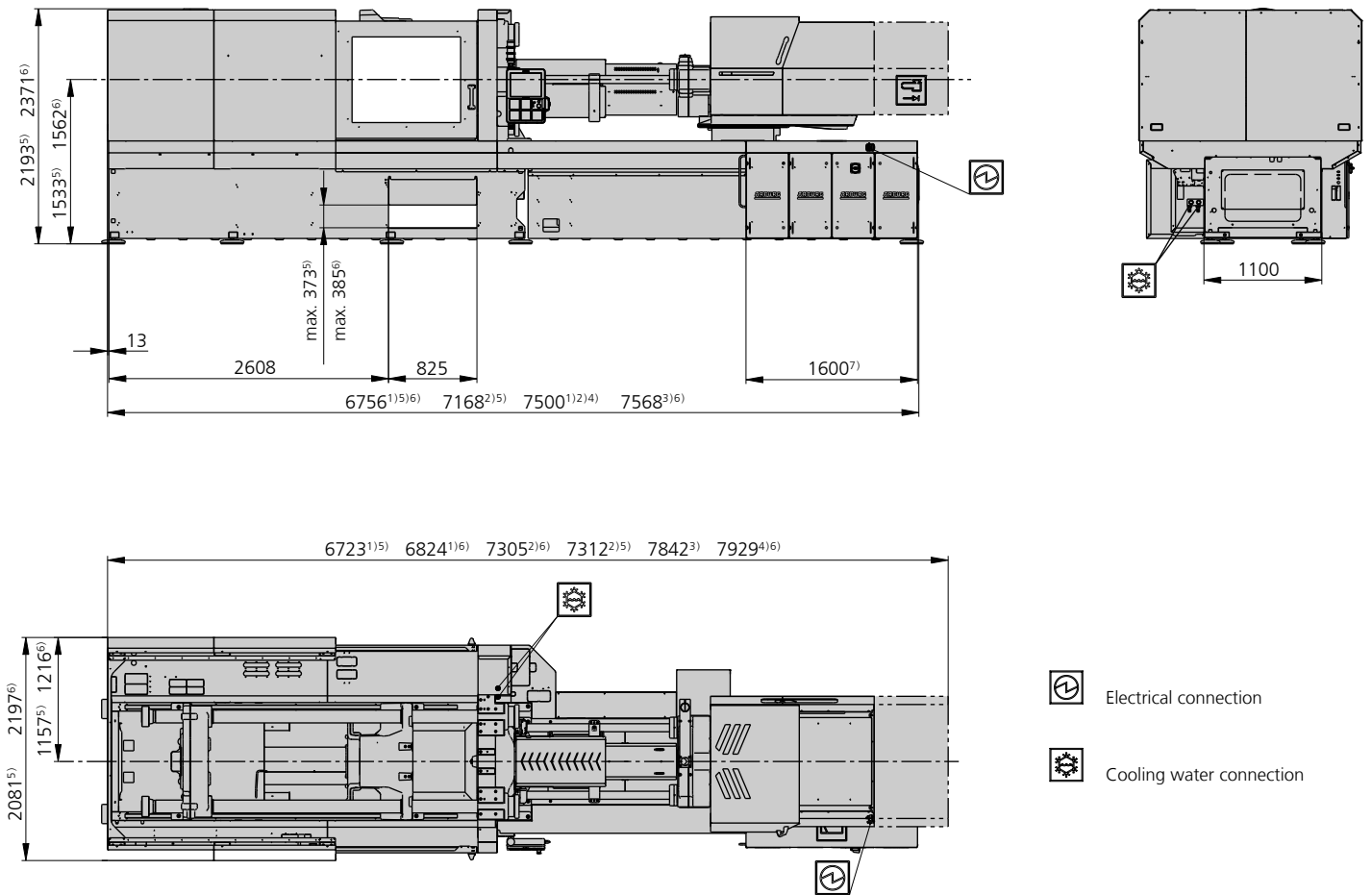
Distance between tie bars: 720 x 720 mm



Clamping force: 3200 kN

Injection unit (acc. to EUROMAP): 1300, 2100, 3200

**ARBURG**

# MACHINE DIMENSIONS | 720 S



-  Electrical connection
-  Cooling water connection

- 1) Injection unit 1300
- 2) Injection unit 2100
- 3) Injection unit 3200 + 2 pumps
- 4) Injection unit 3200
- 5) Machine model with 1 pump or 2 pumps
- 6) Machine model with hydraulic accumulator
- 7) Subject to performance variant and injection unit size

# TECHNICAL DATA | 720 S

Clamping unit			720 S		
with clamping force	max. kN		3200		
Opening force   stroke	max. kN   mm		800   700		
Mould height, fixed   variable	min. mm		700   [300-700]		
Platen daylight fixed   variable	max. mm		1400   [1000-1400]		
Distance between tie bars (w x h)	mm		720 x 720		
Mould mounting platens (w x h)	max. mm		1040 x 1040		
Weight of movable mould half	max. kg		3600		
Ejector force   stroke	max. kN   mm		100   250		
Dry cycle time EUROMAP <sup>2</sup>	1 pump	min. s - mm	4,8 - 504		
	2 pumps	min. s - mm	3,5 - 504		
	Accum.	min. s - mm	2,1 - 504		

Injection unit			1300			2100			3200		
with screw diameter	mm		55	60	70	60	70	80	70	80	90
Effective screw length	L/D		22	20	17	23	20	17,5	23	20	18
Screw stroke	max. mm		235			280			320		
Calculated stroke volume	max. cm <sup>3</sup>		558	664	904	792	1078	1407	1232	1608	2036
Shot weight	max. g PS		510	607	826	723	984	1286	1125	1469	1860
Material throughput	max. kg/h PS		86	96	115	125	145	175	185	215	250
	max. kg/h PA6.6		43	48	58	62	74	88	93	110	125
Injection pressure	max. bar		2380	2000	1470	2500	2000	1530	2500	2000	1580
Holding pressure	max. bar		2380	2000	1470	2500	2000	1530	2500	2000	1580
Injection flow <sup>2</sup>	1 pump	max. cm <sup>3</sup> /s	238	284	388	224	306	400	---		
	2 pumps	max. cm <sup>3</sup> /s	238	284	388	224	306	400	290	380	482
	Accum.	max. cm <sup>3</sup> /s	714	848	1156	1132	1540	2012	1188	1552	1964
Screw circumferential speed <sup>2</sup>	1 pump	max. m/min	40	43	51	43	51	58	---		
	2 pumps	max. m/min	40	43	51	43	51	58	47	54	61
	Accum.	max. m/min	19	21	25	21	25	28	23	26	29
Screw torque	max. Nm		1510	1640	1920	2140	2500	2550	3140	3510	3510
Nozzle contact force   retraction stroke	max. kN   mm		90   550			110   600			110   600		
Heating capacity   zones	kW		22,9   8			31,4   8			38,4   8		

Drive and connection			1 pump (servo)		2 pumps			Accum.		
with injection unit			1300	2100	1300	2100	3200	1300	2100	3200
Net weight of machine	kg		17000	17700	17000	17700	19200	---		
Sound press. level   Insecurity <sup>4</sup>	dB(A)		< 65		73   3			< 70		
Oil filling	l		360		300	380	460	460		
Drive power <sup>2</sup>	max. kW		45	55	45	55	55	37	37	45
Electrical connection <sup>3</sup>	kW		71	76	71	89	96	63	71	86
	Total	A	---		---			---		
	Machine	A	100	125	125	125	125	100	100	125
Cooling water connection	max. °C		30		30			30		
	min. Δp bar		1,5   DN 25		1,5   G 2"			1,5   G 2"		

Machine type	
with EUROMAP size designation <sup>1</sup>	Drive
720 S 3200-1300	1   2   Accum.
720 S 3200-2100	1   2   Accum.
720 S 3200-3200	-   2   Accum.

### Upon request: other machine types and mould installation heights, screws, drive powers etc.

All specifications relate to the basic machine version. Deviations are possible depending on variants, process settings and material type. Depending on the drive, certain combinations, e.g. max. injection pressure and max. injection flow may be mutually exclusive.

1) Clamping force (kN) - size of injection unit = max. stroke volume (cm<sup>3</sup>) x max. injection pressure (kbar)

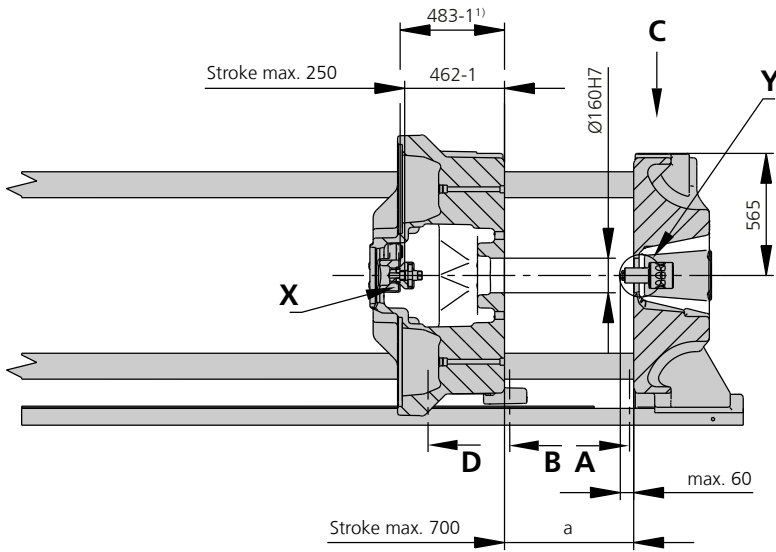
2) Specifications depend on the drive variant / drive configuration.

3) Specifications relate to 400 V/50 Hz.

4) Detailed info in the operating instr.

[ ] Specifications apply to alternative equipment.

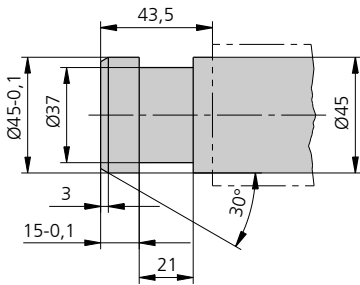
# MOULD INSTALLATION DIMENSIONS | 720 S



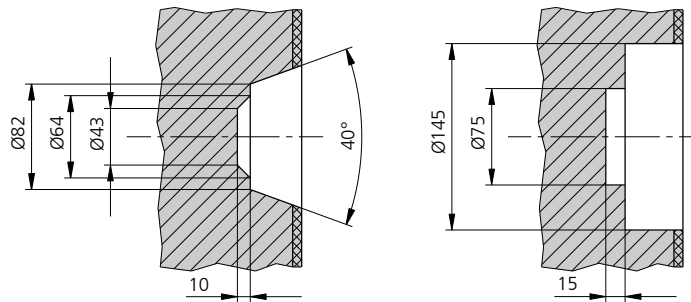
a max.	Mould installation height
Fixed	700
variable, manually	[400, 500, 600]
variable, automatically	[300-700]

[ ] Specifications apply to alternative equipment  
 \* Variable installation height as standard in accumulator version

## Ejector bolt | X

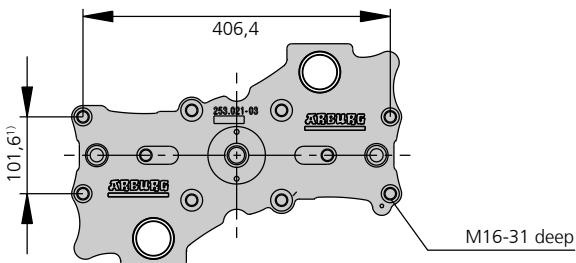


## Bore in mould (if required) | Y

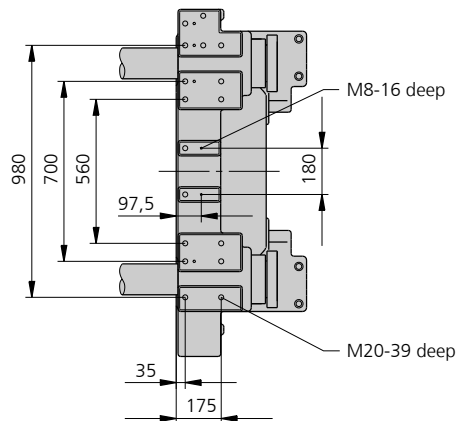


thermoset version -  
 Injection units 2100 and 3200  
 available upon request

## Ejector plate | D



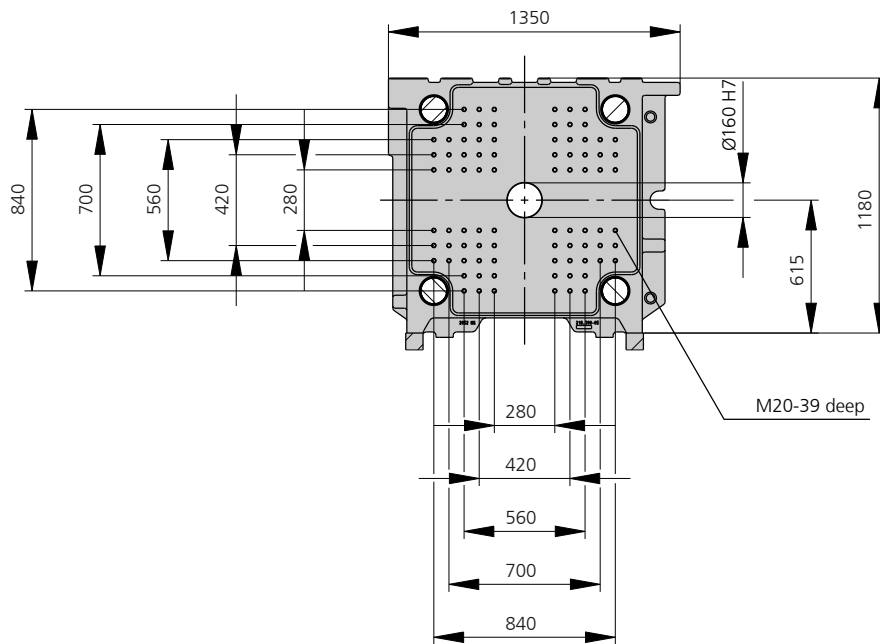
## Robotic system mounting | C



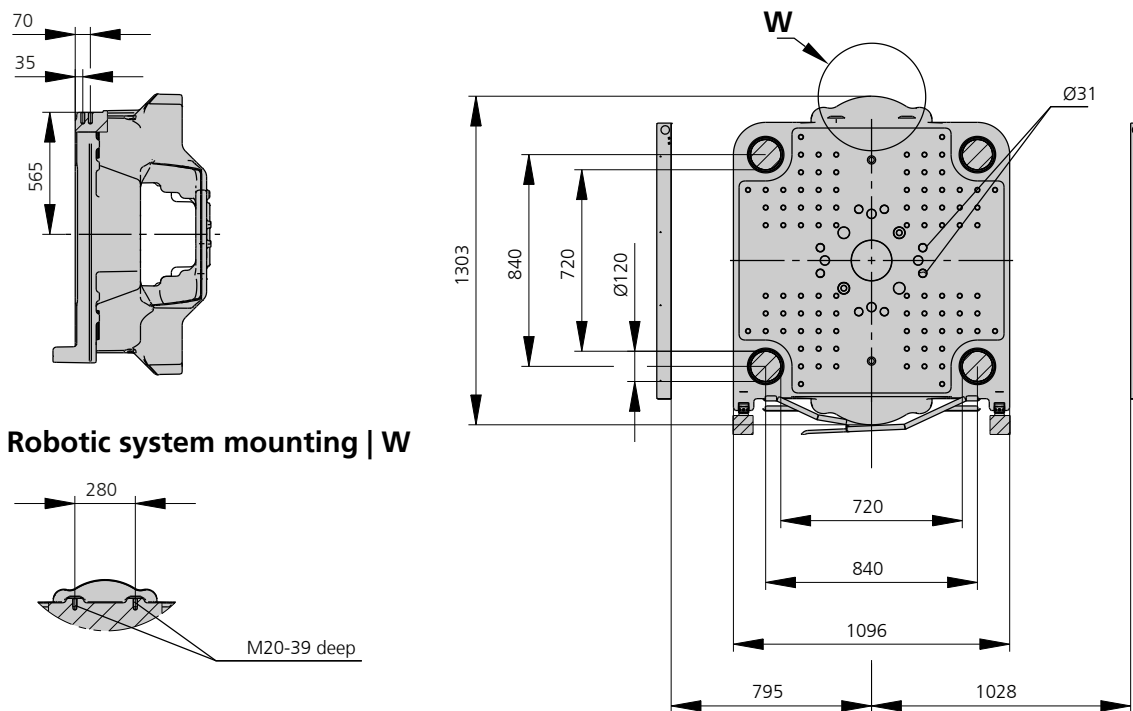
1) Positions of ejector plate

# MOULD INSTALLATION DIMENSIONS | 720 S

## Fixed mould mounting platen | A



## Moving mould mounting platen | B



# SHOT WEIGHTS | 720 S

## Theoretical shot weights for the most important injection moulding materials

Injection units according to EUROMAP		1300			2100			3200		
Screw diameter	mm	55	60	70	60	70	80	70	80	90
Polystyrene	max. g PS	510	607	826	723	984	1286	1125	1469	1860
Styrene heteropolymerizates	max. g SB	498	593	807	707	962	1256	1099	1436	1817
	max. g SAN, ABS <sup>1)</sup>	488	581	791	693	943	1231	1077	1407	1781
Cellulose acetate	max. g CA <sup>1)</sup>	574	683	930	814	1108	1447	1266	1654	2093
Celluloseacetobutyrate	max. g CAB <sup>1)</sup>	534	635	865	757	1030	1346	1177	1538	1946
Polymethyl methacrylate	max. g PMMA	527	627	854	747	1017	1329	1163	1518	1922
Polyphenylene ether, mod.	max. g PPE	473	563	767	671	914	1194	1044	1364	1726
Polycarbonate	max. g PC	536	638	868	760	1034	1351	1182	1544	1954
Polysulphone	max. g PSU	554	659	897	785	1069	1396	1222	1596	2019
Polyamides	max. g PA 6.6   PA 6 <sup>1)</sup>	507	603	821	719	978	1278	1118	1461	1848
	max. g PA 6.10   PA 11 <sup>1)</sup>	473	563	767	671	914	1194	1044	1364	1726
Polyoximethylene (Polyacetal)	max. g POM	630	749	1020	893	1215	1588	1389	1814	2296
Polyethylene terephthalate	max. g PET	607	723	984	861	1172	1531	1340	1750	2215
Polyethylene	max. g PE-LD	385	458	624	546	744	971	850	1110	1405
	max. g PE-HD	398	473	644	564	768	1003	877	1146	1450
Polypropylene	max. g PP	406	484	658	576	784	1025	897	1171	1482
Fluoropolymerides	max. g FEP, PFA, PCTFE <sup>1)</sup>	816	971	1322	1157	1575	2058	1800	2352	2976
	max. g ETFE	716	852	1160	1015	1382	1805	1579	2063	2611
Polyvinyl chloride	max. g PVC-U	616	734	998	874	1190	1554	1360	1776	2247
	max. g PVC-P <sup>1)</sup>	569	678	922	808	1099	1436	1256	1641	2076

1) average value

**ARBURG GmbH + Co KG**  
 Arthur-Hehl-Strasse  
 72290 Lossburg  
 Tel.: +49 7446 33-0  
 www.arburg.com  
 contact@arburg.com